

CRACKERNECK

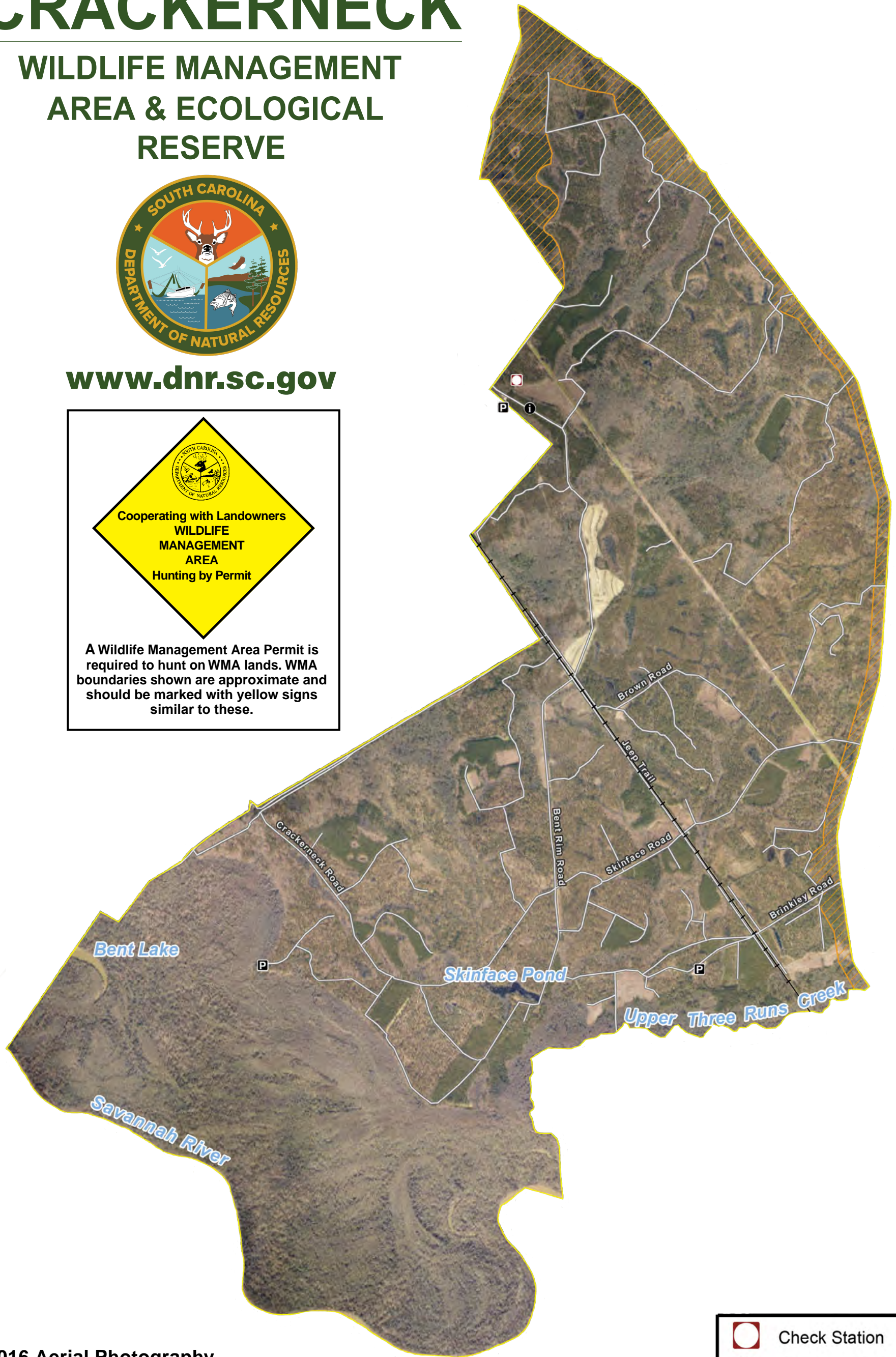
WILDLIFE MANAGEMENT AREA & ECOLOGICAL RESERVE



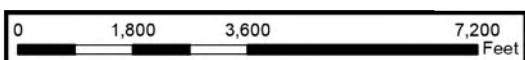
www.dnr.sc.gov



A Wildlife Management Area Permit is required to hunt on WMA lands. WMA boundaries shown are approximate and should be marked with yellow signs similar to these.



* 2016 Aerial Photography



- Check Station
- Kiosk Location
- Parking
- Railroad
- Road
- Safety Zone
- Crackerneck Boundary



CRACKERNECK WMA & ER: SPECIAL RULES AND REGULATIONS 2025-2026

Visitor Registration: All individuals utilizing Crackerneck WMA are required to SIGN IN prior to entering the area and SIGN OUT upon leaving. Anyone not following this procedure will be considered trespassing. SCDNR will be present to register visitors on most occasions, but in their absence, visitors are required to register themselves. PLEASE PRINT neatly and provide accurate information.

Emergency Evacuation Procedures: In the event of an emergency, Security personnel will use patrol cars/helicopters to travel the internal Crackerneck WMA road system sounding hi-lo sirens. Upon hearing these sirens, all individuals inside the gate should immediately return to the check station for further evacuation instructions. Individuals who have entered by the Savannah River should not return to the Crackerneck WMA sign-in station after hearing warning sirens. Instead, after exiting the river individuals should telephone the Savannah River Operations Center at 803-725-1911 and inform the call taker that you have evacuated Crackerneck WMA by Savannah River access. Explain you have evacuated as directed by the hi-lo siren of security vehicles. Tune to any of the following radio or television stations for emergency instructions: WBBQ FM 104.3 – WKXC FM 99.5 – WDOG FM 93.5 – WBBQ AM 1340 – WBRO AM 1310 - WJBF TV Ch 6 – WRDW TV Ch 12 – WAGT TV Ch 26.

PUBLIC ACCESS IS PERMITTED ONLY DURING DATES AND TIMES LISTED IN THIS BROCHURE.

MAXIMUM RECOMMENDED SAFE SPEED ON ALL ROADS IS 25 MPH. USE CAUTION AT ALL INTERSECTIONS.

ATV'S, AND MOUNTAIN BICYCLES MAY ONLY TRAVEL ON EXISTING, CONVENTIONAL VEHICLE ROADS. NO OFF ROAD USES.

ALL HARVESTED GAME AND FISH MUST BE CHECKED IN AT THE GATE PRIOR TO REMOVAL FROM THE AREA.

29202. 20-12657 Printed on recycled paper. The South Carolina Department of Natural Resources prohibits discrimination on the basis of race, color, gender, national origin, disability, religion, or age. Direct all inquiries to the Office of Human Resources, PO Box 167, Columbia, S.C.

Visit www.dnr.sc.gov for more information, or to purchase a license.



All reptiles, amphibians, fox squirrels, bobcats, foxes, and otters are protected and may not be harvested. DO NOT capture, harass, remove, or kill these animals.

Ecological and forest research projects are being conducted in the area. DO NOT DISTURB. Signs designate these areas as "SREL RESEARCH AREAS" and/or "SRI" or "US FOREST SERVICE-SAVANNAH RIVER RESEARCH AREA". These areas may contain rain gauges, nets, poles, "drift" fences constructed of aluminum flashing, traps of various kinds, duck nest boxes, and other equipment. Trees may be marked in various ways such as with flagging, metal bands or tags. Please, DO NOT DISTURB.

SAFETY BUFFER ZONE
A 100-yard area west of S.C. 125 and a large section south of Jackson have been established as safety buffer zones and are excluded from the hunt area. The buffer zone will be marked at 100 ft. intervals with "Safety Zone, No Shooting" and "U.S. Government Property, No Trespassing" signs. It is illegal to shoot into or trespass within these buffer zones. No access is allowed from S.C. 125 or Brown Road. The only access is at the check station on Bent Rim Rd., or by the Savannah River. Hunters entering from the river still have to sign in and out at the gate.

PROHIBITED ACTIVITIES

Camping, dirt bikes, and all other uses not previously specified are prohibited.

Recreational 4X4 off-road driving is prohibited.

THE USE AND/OR POSSESSION OF BUCKSHOT IS NOT PERMITTED AT ANY TIME.

NO ALCOHOLIC BEVERAGES OR ILLEGAL DRUGS ARE ALLOWED.



FISHING DAYS

Fishing is permitted on all open days. Skinface Pond limit: 2 bass/day, 14" minimum; 5 catfish/day. State creel limits apply to other species in the pond and to all fishing in the swamp lakes.

NO Fishing or Public Use of Upper Three Runs Creek. Boat access from the Savannah River up Three Runs Creek, or from Box Landing off Brinkley Road is PROHIBITED.

SCOUTING & NON-HUNTING DAYS

Gate Hours: 6:00AM-6:00PM

Sept., March, and May; SATURDAYS ONLY

Sept: 6, 13, 20, 27

March: 7, 14, 21

May: 2 (1:00PM-6:00PM ONLY)

May: 9, 16, 23

Approved uses are scouting, fishing, and non-consumptive activities (birding, hiking, nature photography, sightseeing, mountain biking, horseback riding, and canoeing). NO WEAPONS.

HOG, COYOTE, & ARMADILLO HUNTING

Any open season, but weapon restrictions apply.

No size/bag limit. No animals removed alive.

No hog hunting with dogs allowed at any time.

LITTERING WILL NOT BE TOLERATED. PLEASE HELP KEEP THE AREA CLEAN.

ALL hunters must be out the gate by 1:00PM.

March 28: Special Youth Hunt
April 3 - May 2: (Fri. & Sat. ONLY)

Gate Hours:
5:30AM-1:00PM

Limit: 1 gobbler per day, 2 per season.
TURKEY HUNTING DATES



Night hunts end at midnight & ALL HUNTERS MUST EXIT GATE BY 1:00AM.

Oct. 25 - Dec. 13 (Sat. Nights ONLY)
Jan. 2 - Feb. 28 (Fri. & Sat. Nights ONLY)

These hunts start 1 hour after official sunset.

Raccoon dogs allowed only during the following hunts. Hunters must retrieve dogs & exit gate by the times listed below for the end of each raccoon hunt. 3 raccoons per party, per night. No limit on opossums.

RACCOON HUNTING DATES



DEER HUNTING SEASON

Oct. 3 & 4: Archery Only

Oct. 10 & 11: Primitive Weapons

Oct. 17 - Dec. 27 (Fri. & Sat. ONLY): Still Gun Hunts

Gate Hours:

Oct. 3 - Nov. 8: 4:30AM-8:30PM (Fri. & Sat. ONLY)

Nov. 14 - Dec. 27: 4:30AM-7:30PM (Fri. & Sat. ONLY)

Crackerneck WMA is a Quality Deer Management Area. Antlered deer must have 4 points on one side or 12-inch inside spread.

Hunters will be required to use personal tags on all harvested deer. State WMA limits apply.

WATERFOWL HUNTING SEASON

Nov: 21, 22, 28, 29

Dec: 12, 13, 19, 20, 26, 27

Jan: 2 - 31 (Fri. & Sat. ONLY)

Shooting hours are half hour before sunrise to sunset.

Waterfowl hunting dogs are allowed during season.

State and Federal bag limits apply.

SMALL GAME SEASON

Oct. 17 - Feb. 28 (Fri. & Sat. ONLY)

State and Federal season and bag limits apply.

Quail, dove, and squirrel dogs are allowed in season.

Rabbit dogs are allowed only during the Jan.-Feb.

portion of the small game season. Tracking collars suggested for all dogs.

Gate Hours:

Oct. 17 - Oct. 26: 4:30AM-8:30PM

Oct. 31 - Dec. 27: 4:30AM-7:30PM

Jan. 2 - Feb. 28: 5:30AM-7:00PM

LITTERING WILL NOT BE TOLERATED. PLEASE HELP KEEP THE AREA CLEAN.